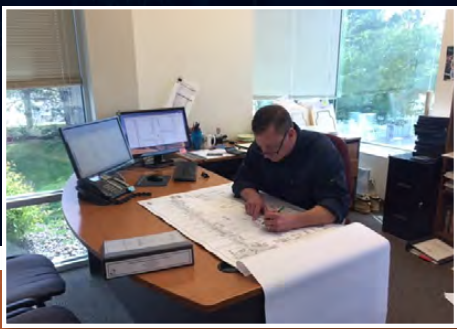


# DEL 6400 TRIBUTARY IMPROVEMENTS

## STATEMENT OF QUALIFICATIONS - SPECIAL DISTRICTS



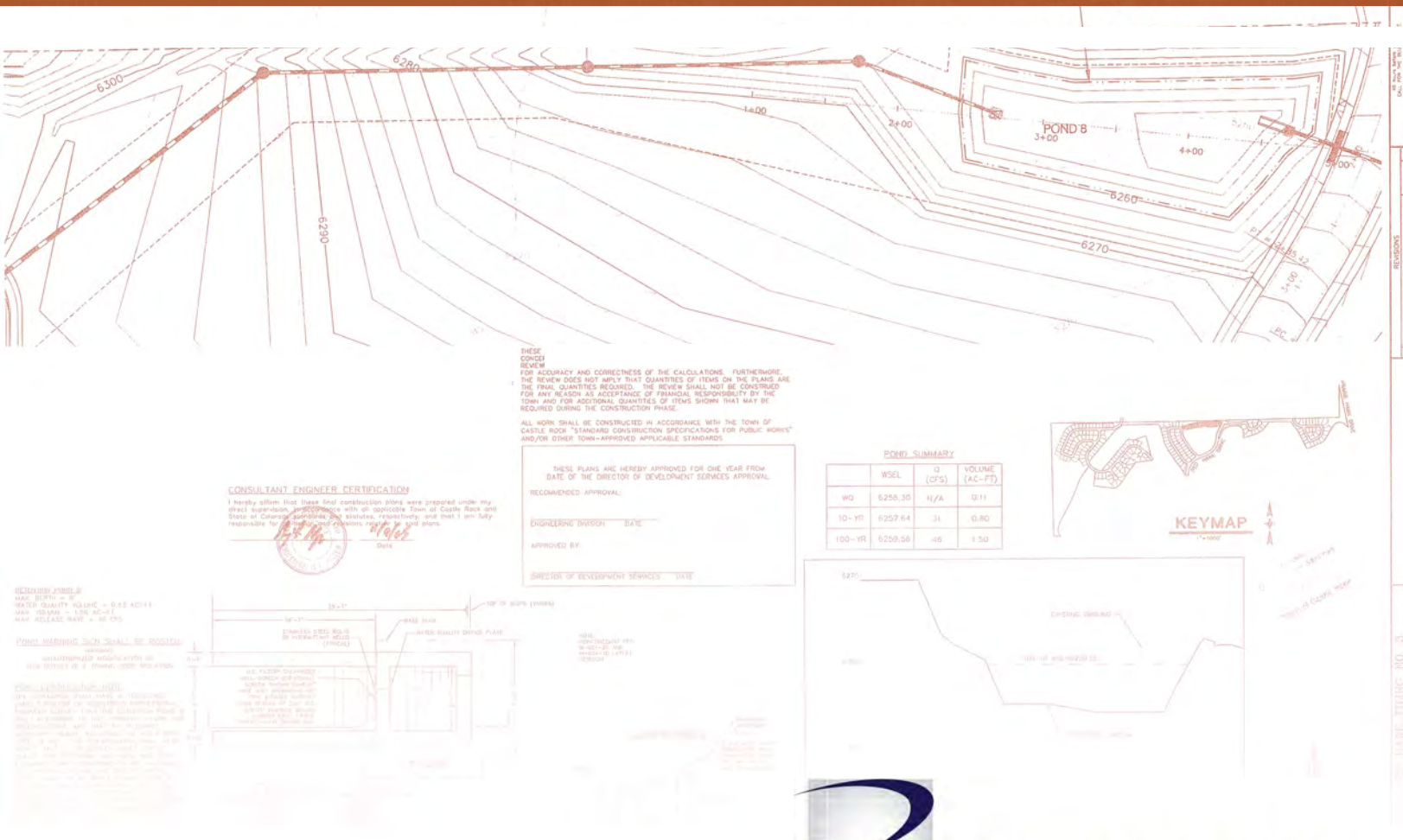
ENGINEERING



CONSTRUCTION ADMINISTRATION



UTILITY LOCATES



## TABLE OF CONTENTS

### STATEMENT OF QUALIFICATIONS

#### SECTION

#### PAGE

Introduction to RG and Associates, LLC .....	1
Office Locations.....	1
DBE, W/MBE, and SBE Certified .....	1
The RGA Advantage.....	2
Services .....	3
RGA Clients.....	5
Grant/Loan Application, Assistance, and Implementation Services.....	7
Water and Wastewater Engineering.....	8
Drainage and Hydrologic Engineering.....	13
Highway and Roadway Engineering.....	14
Bridge and Structural Engineering.....	15
Development Review.....	16
Utility Locates.....	17
Construction Administration Services.....	18
Multi-Use Trail and Park Engineering.....	19
Personnel.....	20

### CHANNEL 6400 TRIBUTARY IMPROVEMENTS



## INTRODUCTION TO RG AND ASSOCIATES, LLC

The **RG and Associates, LLC (RGA)** team has been providing award-winning engineering, planning and construction administration services to clients throughout Colorado for over 33 years. Our staff assists special districts, cities, and counties in the planning, design, construction, and maintenance of public infrastructure projects. It is our goal to work closely with our clients to provide services that are efficient, cost-effective and ensure reasonable engineering, planning and construction administration practices.

### RG and Associates, LLC provides expertise in the following disciplines:

- Special District Management and Engineering
- On-Call Services
- Construction Administration
- Utility Locates
- Certified Operator in Responsible Charge (ORC)
- Operation and Maintenance Instructional Videos
- Grant Application and Implementation
- Water and Wastewater Engineering
- Drainage and Hydrologic Engineering
- Highway and Roadway Engineering
- Bridge and Structural Engineering
- Multi-Use Trail and Park Engineering

## OFFICE LOCATIONS



**COMPANY HEADQUARTERS**  
4885 Ward Road, Suite 100  
Wheat Ridge, CO 80033



**SOUTHWESTERN COLORADO REGIONAL OFFICE**  
655 Grand Avenue  
Del Norte, CO 81132

## DBE, W/MBE, AND SBE CERTIFIED

RG and Associates, LLC has Disadvantaged Business Enterprise (DBE), Minority/Women Business Enterprise (W/MBE), and Small Business Enterprise (SBE) certification through the City and County of Denver.



## THE RGA ADVANTAGE

### The RGA team has been working together for many years.

Our staff has gained experience working together on many projects, resulting in a depth and versatility not normally found in smaller firms.

### Experience and expertise of an established local firm.

In the past 33 years, the RGA team has completed projects for numerous clients throughout Colorado. Our firm is familiar with state and regional regulations, specifications, and procedures.

### We are large enough to provide a wide range of engineering disciplines, yet small enough to maintain a personal level of service.

Our personnel works as an extension to your staff with a collaborative approach focused on communication.

### RGA is familiar with the needs of special districts and smaller municipalities.

RGA serves in the capacity of District Engineer and City/Town Engineer for many of our clients. RGA also assists its district and municipal clients in obtaining grants and loans to complete infrastructure improvements and upgrades.

### Proven track-record of satisfied clients.

Client satisfaction is our top priority. Many of our clients have been with the firm for numerous years, some since 1986.

### RGA provides innovative project solutions.

Our team received **Awards for Engineering Excellence** from the American Consulting Engineers Council for the design of a multiple well and treatment facility in Parker, Colorado and for the emergency restoration of the water treatment plant in Alma, Colorado. We also received an **Award for Engineering Excellence** from the Rocky Mountain Chapter of the Concrete Institute for the Old Mill Pedestrian Bridge in Grand Junction, Colorado. Most recently, RGA also received an **Excellence in Concrete Pavement** award from the Colorado and Wyoming chapter of the American Concrete Pavement Association for our work on Hospital Road Reconstruction in Brush!, Colorado.



**Award for Engineering Excellence:**  
Clarke Farms Well Pumping Station,  
Parker Water and Sanitation District



**Award for Engineering Excellence:**  
Old Mill Pedestrian Bridge Design  
City of Grand Junction



**Award for Engineering Excellence:**  
Water Treatment Plant Restoration  
Town of Alma



**Excellence in Concrete Pavement**  
Hospital Road Reconstruction  
City of Brush!



## SERVICES

### SPECIAL DISTRICT ENGINEERING



Training Videos,  
Platte Canyon Water and  
Sanitation District



District Engineer,  
Applewood Sanitation District



Pipe Assessment,  
Town of Mountain View



Water and Sewer Modeling,  
Crestview Water and Sanitation  
District

RGA provides a broad range of consulting services to special districts. We serve several of our clients in the capacity of District Manager, Engineer and/or ORC. Full-service capabilities include planning, design, and construction administration for:

#### Engineering Design

- Water and Wastewater Design
- Lift Station and Pumps
- Storage Tanks
- Grease and Sand Interceptors

#### Development Review

- Work with developer's and developer's engineers to assist them with obtaining approvals
- Review of reimbursement agreements, intergovernmental agreements, and inclusion agreements
- Review of utility reports and construction documents for conformance to district standards
- Review of plats and easements
- Conduct pre-construction meeting
- Review of material submittals
- On-site construction observation to ensure project is constructed per approved plans
- Construction Observation and Documentation
- Initial and Final Acceptance inspections and recommendations

#### Studies

- Water and Sanitary Sewer System Modeling
- Annual System Status Reports
- Capital Improvement Plans
- Wastewater and Water Rate Studies
- Asset Management/Fiscal Sustainability
- Maintenance Operations Intervals
- Sanitary Sewer Line/Manhole Conditions Reports
- Sanitary Sewer Collection System Evaluation
- Sanitary Sewer Capacity Studies
- Water Transmission and Distribution System Evaluations

#### Construction Management

- Preparation of bid packages
- Advertisement and bidding of projects
- Conduct bid opening
- Review of bids, bid tabulation and letter of recommendation of qualified contractor
- Execution of contract documents
- Preconstruction Meetings
- Construction Observation and Documentation
- Initial and Final Acceptance inspections and recommendations
- Review all closeout documents
- Provide as-builts

## SERVICES (CONTINUED)

### ON-CALL SERVICES



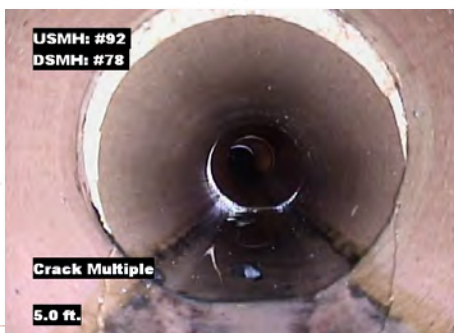
Water and Wastewater System Design,  
Kremmling Sanitation District

On-call services can be provided on an interim basis or as-needed, depending on the specific needs of the client. Professional services provided on an on-call basis include:

- City/Town Engineer
- City/Town Planner
- District Manager
- District Engineer
- Public Works Director
- Certified Floodplain Manager
- Certified Operator In-Responsible Charge
- Construction Manager/Observer
- Building Inspection

To View Our Full List of Services, Please Visit Our Website:

[www.rgengineers.com](http://www.rgengineers.com)



**BEFORE:** Fractured Pipe,  
Sanitary Sewer Rehabilitation Project,  
Columbine Water and Sanitation District



**AFTER:** Cured-in-Place Pipe,  
Sanitary Sewer Rehabilitation Project,  
Columbine Water and Sanitation District

## RGA CLIENTS

The following is a list of all the municipal and special district clients we have worked for over the year. We have maintained long-term relationships with many of these clients and have served some municipal and special district clients for 33 years.

### Representative Clients:

- Adams County
- Applewood Sanitation District
- Archuleta County
- Bear Creek Water and Sanitation District
- Berkley Water and Sanitation District
- Castle Pines Metropolitan District
- Centennial Water and Sanitation District
- Chaparral Metropolitan District
- Cherry Creek South Metropolitan District
- City of Brighton
- City of Brush!
- City of Castle Pines
- City of Center
- City of Creede
- City of Delta
- City of Leadville
- City of Littleton
- City of Longmont
- City of Louisville
- City of Sheridan
- City of Westminster
- City of Wheat Ridge
- Clear Creek County
- Columbine Water and Sanitation District
- Crestview Water and Sanitation District
- Deer Creek Metropolitan District
- Denver Southeast Suburban Water and Sanitation District
- East Alamosa Water and Sanitation District
- Franktown Business Area Metro District
- Highland Park Metropolitan District
- La Plata County
- Lincoln Park Metropolitan District
- Mesa County
- North Pecos Water and Sanitation District
- Paint Brush Hills Metropolitan District
- Perry Park Metropolitan District
- Piñon Water and Sanitation District
- Platte Canyon Water and Sanitation District
- Rampart Metropolitan District
- Red Hill Forest (POMWCA)
- Round Mountain Water and Sanitation District
- Routt County
- Southgate Sanitation District
- Southwest Metropolitan Water and Sanitation District
- Spring Mesa Metropolitan District
- Steamboat Lakes Water and Sanitation District
- Superior Metropolitan District No. 1
- Todd Creek Village Metropolitan District
- Town of Bayfield
- Town of Buena Vista
- Town of Dove Creek
- Town of Erie
- Town of Estes Park
- Town of Grand Lake
- Town of Hot Sulphur Springs
- Town of Kiowa
- Town of Jamestown
- Town of Johnstown
- Town of Lochbuie
- Town of Lyons
- Town of Meeker
- Town of Minturn
- Town of Mountain View
- Town of Palmer Lake
- Town of Parachute
- Town of Red Cliff
- Town of South Fork
- Town of Superior
- Urban Drainage & Flood Control District
- Westridge Sanitation District



## RGA CLIENTS

**RGA is presently the designated District Engineer, District Manager, City/Town Engineer, or has been selected to provide On-Call services for the following Colorado special districts and municipalities.**

- Applewood Sanitation District
- Cherry Creek Basin Water Quality Authority
- City of Brighton
- City of Brush!
- City of Castle Pines
- City of Leadville
- City of Littleton
- City of Sheridan
- City of Wheat Ridge
- Clear Creek County
- Crestview Water and Sanitation District
- Deer Creek Metropolitan District
- East Alamosa Water and Sanitation District
- Lincoln Park Metropolitan District
- Paint Brush Hills Metropolitan District
- Southwest Metropolitan Water and Sanitation District
- Spring Mesa Metropolitan District
- Todd Creek Village Metropolitan District
- Town of Buena Vista
- Town of Grand Lake
- Town of Kiowa
- Town of Mountain View
- Town of Nederland
- Town of Red Cliff
- Town of South Fork
- Town of Superior
- Westridge Sanitation District



Manhole Inspection,  
Town of Mountain View



Administrative Building Design and Construction Administration  
Paintbrush Hills Metropolitan District

### CHANNEL 6400 TRIBUTARY IMPROVEMENTS





## GRANT/LOAN APPLICATION, ASSISTANCE, AND IMPLEMENTATION SERVICES

RGA assists clients with obtaining grants and loans for repairing and updating water and sewer lines, treatment facilities, trails, and for municipal code and comprehensive plan updates. After receiving grant approval, RGA provides design, plans, construction specifications, and construction grant administration to bring the project to completion. **To date, RGA has secured over \$22.5 million for its clients from various loan and grant agencies.**

Project	Municipality/District	Amount	Source
Sewer System Rehabilitation	Town of Del Norte	\$6,000,000	USDA/CDPHE
Raw Water Pipeline	Parker Water and Sanitation District	\$4,076,400	DWSRF
Watermain Replacements	Town of Kremmling	\$2,000,000	ARRA/CDPHE
Wastewater Treatment Plant	Fairways Metropolitan District	\$1,500,000	CDPHE
Sewer System Rehabilitation	City of Monte Vista	\$1,300,000	CDPHE
Collection System Improvements	City of Monte Vista	\$1,300,000	DOLA
Water Distribution System Replacements	Hi-Land Acres Water and Sanitation District	\$1,200,000	ARRA/CDPHE
Wastewater Treatment Plant Improvements	Town of Eckley	\$950,000	CDPHE
Water Treatment Plant/Water Distribution	Town of Eckley	\$938,000	DOLA
Watermain Replacements	Town of Kremmling	\$750,000	DOLA
Sheridan Square Neighborhood Park	City of Sheridan	\$350,000	ACOS
Water Treatment Plant/Water Distribution	Town of Eckley	\$300,000	CDPHE
Safe Routes to School Infrastructure/ Non-Infrastructure Grants	City of Sheridan	\$300,000	SRTS/CDOT
Collection System Improvements	City of Monte Vista	\$291,000	EPA
Pedestrian Trail North	Town of Bennett	\$201,416	Adams County/CDOT
Waterline and Storage Tank Rehabilitation	Forest View Acres Water District	\$200,000	DOLA
7th Street Waterline and Hydrant Replacements	Town of Kersey	\$179,100	DOLA
Wastewater Treatment Plant	Town of Gilcrest	\$150,000	DOLA
Pedestrian Trail South	Town of Bennett	\$102,000	Adams County
Construction Grant for Trail Crossing Safety Improvements	City of Sheridan	\$100,000	ACOS
Planning Grants for Trail Crossing Safety Issues	City of Sheridan	\$100,000	ACOS
Comprehensive Plan Update	Town of Gilcrest	\$75,000	DOLA
Connecting Trails Plans	City of Sheridan	\$50,000	ACOS
Pool Feasibility Study	City of Sheridan	\$30,000	CHF
Rate Study	Town of Eckley	\$25,000	ARRA
Preliminary Engineering Report and Design	Forest View Acres Water District	\$25,000	ARRA
Comprehensive Plan Update	City of Sheridan	\$17,500	DOLA
Sewer System Rehabilitation	City of Monte Vista	\$10,000	CDPHE

## WATER AND WASTEWATER ENGINEERING

RGA has extensive experience in water and wastewater engineering. Services include:

- System evaluations
- Master planning
- Rate studies
- Water and wastewater treatment plants
- Water and wastewater pump stations
- Lift stations
- Storage tanks
- Annual System Status Reports
- Preliminary Engineering Reports (PERs)
- Collection and distribution systems
- Wells
- Effluent storage and re-use
- Computer modeling
- Pond liners
- Development review

### Representative Projects – Wastewater

#### Platte Canyon Water and Sanitation District Littleton, Colorado

- District Engineer
- District-wide annual sewer replacements

#### Applewood Sanitation District Wheat Ridge, Colorado

- District manager/Engineer/ORC
- Annual system status reports
- District-wide annual sewer replacements and cured-in-place pipe rehabilitation
- Utility locates

#### Westridge Sanitation District Wheat Ridge, Colorado

- District Engineer
- Annual system status reports
- District-wide annual sewer replacements and cured-in-place pipe rehabilitation
- Utility Locates

#### Southwest Metropolitan Water and Sanitation District Littleton, Colorado

- District Engineer
- District-wide annual sewer replacements



Wastewater Treatment Plant Improvements,  
Fairways Metropolitan District

- Updates to Engineering Standards
- Development Review

#### Crestview Water and Sanitation District Denver, Colorado

- Development Review Engineer
- Construction Observation

#### Columbine Water and Sanitation District Littleton, Colorado

- District Engineer 2
- Sewer cured-in-place pipe rehabilitation

#### Parker Water and Sanitation District Parker, Colorado

- Effluent storage reservoirs and 2.0 MGD AWT wastewater treatment plant
- 36" and 33" west interceptor lines at Cherry Creek
- 4 miles of 16" treated effluent lines

#### Pinon Water and Sanitation District Trinidad, Colorado

- Facility plan and 2.0 MGD lift station and force main



Lift Station Nos. 1 & 2 Replacement,  
East Alamosa Water and Sanitation District



## Representative Projects – Wastewater Continued

### Galeton Water and Sanitation District Weld County, Colorado

- Preliminary Engineering Report (PER) to obtain funding for a complete replacement of the district's 0.037 MGD wastewater treatment plant.
- Design of 0.037 MGD wastewater treatment plant improvements

### Black Hawk-Central City Sanitation District Black Hawk, Colorado

- 1.0 MGD wastewater treatment plant expansion

### Centennial Water and Sanitation District Highlands Ranch, Colorado

- 29,000 LF of sanitary sewer interceptors in Marcy Gulch and Big Dry Creek

### East Alamosa Water and Sanitation District Alamosa, Colorado

- Capital Improvement Plan (CIP) to assist in prioritizing district capital improvement needs
- Inspection and evaluation of approximately 30,000 LF of sanitary sewer mains
- Design, permitting and construction administration of two major lift station replacements

### Center Sanitation District Center, Colorado

- 0.64 MGD wastewater treatment plant rehabilitation project
- Organic capacity analysis of the district's 0.64 MGD lagoon facility
- Lagoon Seepage Analysis

### Kremmling Sanitation District Kremmling, Colorado

- 0.30 MGD wastewater treatment plant improvements
- Pilot test and full scale implementation of innovative new technology for cold weather lagoon ammonia removal
- Lift station replacement
- Design and permitting of a hexagonal floating lagoon cover system
- Design and permitting of an influent flow monitoring system

### North La Junta Sanitation District La Junta, Colorado

- Analysis of the district's 0.0625 MGD wastewater treatment facility
- Compilation of a Preliminary Engineering Report (PER) to fund numerous facility discharge violations.
- Design of WWTP Rehabilitation Project

### Fairways Metropolitan District Boulder County, Colorado

- 0.107 MGD wastewater treatment plant rehabilitation and tertiary filtration project
- Effluent lift station design

### Bromley Park Metropolitan District No.1 Brighton, Colorado

- 30,000 LF of sewer interceptor and two lift stations

### Stonegate Village and Lincoln Park Metropolitan District Parker, Colorado

- 1.1 MGD AWT wastewater treatment plant



Bio Domes Installation,  
Kremmling Sanitation District



Material Verifications,  
Crestview Water and Sanitation District

## Representative Projects – Wastewater Continued

### City of Louisville

- Design and construction management of a new pond lining system for the city's sports complex irrigation pond.

### City of Monte Vista, Colorado

- 3.09 MGD WWTP Improvements
- Inspection and evaluation of approximately 28,000 LF of sanitary sewer mains (8", 10", 18", 21" and 30").
- Preliminary Engineering Report (PER) to obtain grants and loans for project funding including \$2.8 million in grants and loans
- Design of trenchless CIPP and manhole replacement
- Design of lift station replacement
- Design of WWTP baffle curtain replacement
- Completion of a comprehensive water treatment and distribution system operation and maintenance manual

### City of Edgewater, Colorado

- City-wide sewer rehabilitation program

### City of Thornton, Colorado

- 1.4 MGD sanitary sewer lift station

### City of Trinidad, Colorado

- 2.0 MGD wastewater treatment plant expansion

### City of Westminster, Colorado

- 1.9 MGD sewage lift station

### Town of Eckley, Colorado

- 0.018 MGD wastewater treatment plant rehabilitation

- Design and permitting of two lift stations

### Town of Hugo, Colorado

- Wastewater treatment facility improvements
- Design and permitting of lift station replacement

### Town of Del Norte, Colorado

- 0.99 MGD wastewater treatment plant Improvements
- Closeout of a long standing CDPHE Notice of Violation
- Design and permitting of new influent and effluent flumes
- Inspection and evaluation of approximately 55,000 LF of sanitary sewer mains
- PER to obtain grants and loans for sewer main rehabilitation and inflow and infiltration reduction project funding including \$9.2 million in grants and loans.
- Design of sewer system rehabilitation project
- CDPHE permitting of WWTP hydraulic re-rating.

### Town of Wiley, Colorado

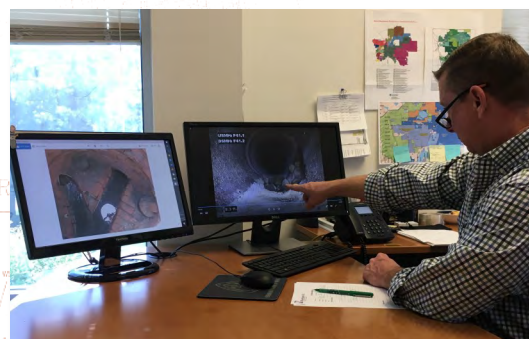
- Wastewater treatment facility improvements
- Design and permitting of lift station replacement

### Mesa County, Colorado

- Design and permitting of 0.045 MGD wastewater treatment facility expansion and improvements



Annual Capital Improvement Project,  
Westridge Sanitation District



Annual System Status Reports,  
Applewood Sanitation District



## Representative Projects – Water

### Platte Canyon Water and Sanitation District Littleton, Colorado

- District Engineer
- District-wide annual waterline replacement projects
- Development Review

### Crestview Water and Sanitation District Denver, Colorado

- 48,000 LF of 8, 12 and 20" waterline replacements
- 8,500 LF of 12" sanitary sewer main replacements
- 200 LF of 24" bore under CDOT ROW
- 45,000 LF of 8, 10, 12, 15, 18" cured-in-place pipe
- District-wide annual cured-in-place pipe rehabilitation
- Comprehensive district-wide water and sewer model

### Southwest Metropolitan Water and Sanitation District Littleton, Colorado

- District Engineer
- District-wide annual waterline replacement projects
- Development Review
- Update Engineering Standards

### Paint Brush Hills Metropolitan District Falcon, Colorado

- Design of wellhouses for wells #3 and #4

### Berkeley Water and Sanitation District Denver, Colorado

- Design of 16 repair locations to transfer District from a Read and Bill Service Contract to a Total Service Contract

- Update Engineering Standards

### Parker Water and Sanitation District Parker, Colorado

9 miles of 30" Zone 3 water transmission line

- Diversion dam
- 14,000 LF of 48" raw waterline
- 74 CFS raw water pumping facility
- 14 Denver basin well facilities
- 2,100 GPM, 4-pump booster pump station
- 37 MG and 54 MG effluent storage reservoir

### North Pecos Water and Sanitation District Denver, Colorado

- 2016 Water Main Replacement design including design and Denver Water permitting of over 5,000 linear feet of waterline.

### Hi-Land Acres Water and Sanitation District Brighton, Colorado

- Design, construction administration and inspection of the replacement of 9,000 LF of 6" and 3,650 LF of 8" PVC water main replacement
- Secured ARRA funding and preformed compliance services and inspection

### Stonegate Village and Lincoln Park Metropolitan Districts Parker, Colorado

- 5.7 MGD water treatment facility and collection, distribution and pumping facilities
- 2.5 and 3.6 MGD post-tensioned concrete storage tanks
- Pumping, control systems, well houses and raw water transmission lines for 11 deep wells



Water Main Replacement,  
Hi-Land Acres Water and Sanitation District



Construction Observation,  
Crestview Water and Sanitation District

## Representative Projects – Water (Continued)

### Buckhorn Valley Metropolitan District Gypsum, Colorado

- Design of a system-wide control and PRV system for the district's raw water system
- Water model of a proposed subdivision within the district

### Town of Jamestown, Colorado

- James Creek Irrigation Ditch
- Design of approximately 1,600 LF of 4 and 6" waterline replacement
- Water treatment plant improvements including electrical, controls, and power conditioning
- Design of storage tank mixing systems for the Town's primary potable water storage tanks.

### Town of Buena Vista, Colorado

- Update of the Town's comprehensive water master plan which included analysis of the Town's raw water capture, water treatment, storage, and distribution system.
- Design of the Ivy League interconnect to consolidate two pressure zones.
- Design of Beldan Street Waterline.
- Central Colorado Regional Airport Utility Improvements including water main extension grants, sewer collection system and lift station.

### Town of Castle Rock, Colorado

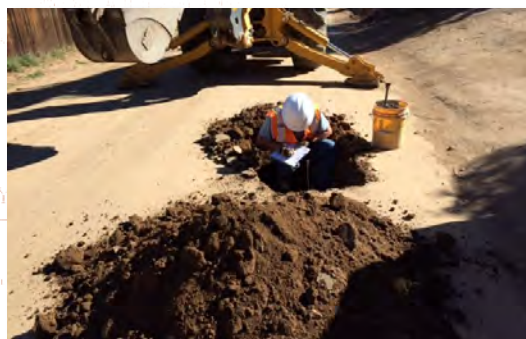
- Pump systems, well houses, transmission lines and well facilities

### Town of De Beque, Colorado

- Increased capacity of existing treatment plant from 144,000 GPD to 396,000 GPD by addition of a membrane filter system



DOLA & CWRPDA Water Improvements,  
**Town of Buena Vista**



DOLA 2015 Water System Improvements,  
**Town of Jamestown**



## DRAINAGE AND HYDROLOGY ENGINEERING

RGA is experienced in all aspects of storm drainage design. Our services include:

- Master Drainage Studies
- Hydrology and Hydraulics
- Evaluation and Improvement of Existing Drainage Systems
- Storm Drainage System Design
- Detention Storage Design and Analysis
- Floodplain and Drainageway Modeling
- FEMA Map Revision and Amendments
- Erosion Control
- Storm Water Treatment/Management

### Representative Projects

#### Town of Buena Vista, Colorado

- East Side Master Plan
- West Side Master Plan
- Cedar Street Detention Storage Design
- State Highway 24 Flooding Evaluation

#### BRW and the City and County of Denver Denver, Colorado

- Colfax Avenue Bridge over Cherry Creek

#### Castle Rock Development Company

- Meadows Filing No. 20.
- Regional Detention Pond and Riparian Channel

#### Deer Creek Metropolitan District Golden, Colorado

- Massey Draw Channel Restoration

#### City and County of Denver, Colorado

- Airport Boulevard (Peña Boulevard) drainage facilities
- Cherry Creek drainage facilities investigation
- Turkey Creek bridge rehabilitation

#### Town of Nederland, Colorado

- 2013 Flood Mitigation and Drainage Improvements

#### Redhawk Filing No. 3, Phase 5 Lennar Homes

- Floodplain Analysis
- CLOMR/LOMR

#### Denver International Airport Denver, Colorado

- Storm sewer system apron and taxiways
- Concourse roof drains collection system
- 9900 GPM storm water pump station
- United Airlines hanger and south campus drainage

#### Town of Estes Park, Colorado

- Master Plan for two (2) distinct planned areas
- Bond Park Phase I and III
- 2013 Flood Mitigation Design and Construction Management

#### Urban Drainage Flood Control District Denver, Colorado

- Niver Creek drops rehabilitation and maintenance project
- Four Lakes Drainageway Second Creek Drop Structures
- 20-Mile Regional Storm Facility
- Sulphur Gulch restoration

#### North La Junta Sanitation District Otero County, Colorado

- Floodplain Analysis
- CLOMR/LOMR



Cedar Street Bond Project,  
Town of Buena Vista

## HIGHWAY AND ROADWAY ENGINEERING

RGA provides complete design and study services related to roadway systems and interchange projects. Our design staff is supported by our structural design services. Our services include:

- Corridor location and conceptual studies
- Highway geometrics
- Structure width and length determination
- Turning movement analysis
- Ramp design
- Hydrology/hydraulics studies and design
- Construction plans and specifications for new and reconstructed highway systems
- Construction administration

### Representative Projects

#### Colorado Department of Transportation (CDOT) Aurora and Montrose County, Colorado

- SH 30 Florida to First Avenue I-25/58<sup>th</sup> Avenue Interchange reconstruction

#### City of Boulder, Colorado

- Mid-Broadway Street widening

#### City of Broomfield, Colorado

- 136<sup>th</sup> Avenue
- Lowell Boulevard at Mountain View Terrace

#### City and County of Denver, Colorado

- 56<sup>th</sup> Avenue/Tower Road

#### City of Thornton, Colorado

- 104<sup>th</sup> Avenue/Riverdale Road

#### Adams County, Colorado

- West 64<sup>th</sup> Avenue improvements

#### City of Sheridan, Colorado

- West Oxford Avenue Rehabilitation

#### Town of Buena Vista, Colorado

- Gregg Drive, Rodeo Road, E. Main Street, S. Main Street, E. Arkansas, Cedar Street

#### Denver International Airport

- West Cargo Road

#### Town of Superior, Colorado

- 88<sup>th</sup> Street roundabout S 36/McCaslin Boulevard Interchange

#### Mesa County, Colorado

- 31-1/2 Road – E-1/2 Road improvements

#### Lowry Redevelopment Authority Denver, Colorado

- Quebec Street improvements

#### City of Black Hawk, Colorado

- SH 119 and Mill Street Bridge and signalized intersection improvements



Gregg Drive Improvements,  
Town of Buena Vista



West Oxford Avenue Replacement,  
City of Sheridan



## BRIDGE AND STRUCTURAL ENGINEERING

RGA provides complete design and study services related to bridge and structural projects. Our services include:

- Retaining walls
- Box culverts
- Single-span bridges
- Major highway bridges
- Building renovation

### Representative Projects

#### City of Grand Junction, Colorado

##### Colorado River Pedestrian Bridge

- 410' three-span bridge

#### City of Alamosa, Colorado

- 300' three-span bridge

#### Steamboat Public Works

##### Steamboat Springs, Colorado

- Pine & Yahmonite Bridges

#### Colorado Springs Public Works

##### Colorado Springs, Colorado

- Stetson Hills Boulevard Bridge

#### Fruita Public Works

##### Fruita, Colorado

- Ottley Avenue Bridge

#### Parker Water and Sanitation District

##### Parker, Colorado

- Lemon Gulch Bridge

#### Executive Engineering

##### Colorado Springs, Colorado

- North Gate Boulevard Bridge over Smith Creek

#### Adams County PW

- Dahlia Street Bridge over the O'Brien Canal
- Adams County Bridge #303 & Niver Creek Improvements

#### City of Brighton Public Works

##### Brighton, Colorado

- 1st Street Culvert Extension and Chambers Road Bridge Replacement

#### Denver Public Works

##### Denver, Colorado

- 56th Avenue Bridges over First Creek



Old Mill Pedestrian Bridge Design,  
City of Grand Junction



Rio Grande River Pedestrian Bridge Design,  
City of Alamosa

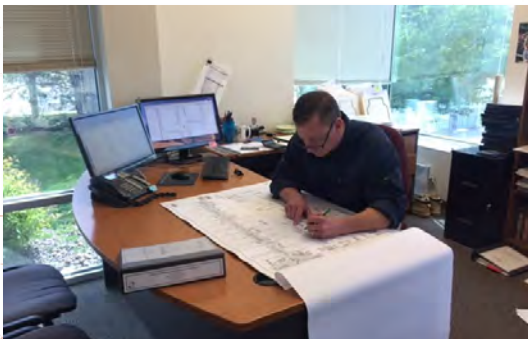
## DEVELOPMENT REVIEW

RGA provides on-call development review, to assist special districts that may have limited staff or resources and have a variable workload associated with the review of private developments. Our team is well-versed in reviewing land development documents that may be referred to a district, such as: preliminary and final plats, zone changes, use by special reviews, variances, site plans, construction documents, subdivision improvements, annexation, and Planned Unit Development (PUD) applications. Our services include:

- Pre-Application Meeting and Review
- Familiarization with District's Rules and Regulations
- Coordination with Applicants
- Coordination with Referring Governing Bodies
- Coordination with Public Agencies
- Coordination with other Referral Agencies
- Efficient Review Timeline
- Site Inspections

## Representative Clients:

- Applewood Sanitation District
- Crestview Water and Sanitation District
- Westridge Sanitation District
- City of Sheridan
- City of Brighton
- City of Brush!
- City of Leadville
- Clear Creek County
- Rio Grande County
- Town of Buena Vista
- Town of Gilcrest
- Town of Grand Lake
- Town of Hayden
- Town of Hot Sulphur Springs
- Town of Johnstown
- Town of Lochbuie
- Town of Meeker



Development Review,  
**Applewood Sanitation District**



Construction Plan Review,  
**Crestview Water and Sanitation District**



## UTILITY LOCATES

RGA provides utility locating services for many of our clients. This includes:

- Emergency Locates
- CO811 Locate Requests and Responses
- Unmarked and Unclaimed Utilities Investigation
- Contactor Site Meeting for Locate Verification
- Easement and Right-of-Way Verification
- Log with Manholes and Utility Lines
- Manhole Markings
- Street and Cleanouts
- Referrals to Other Utility Entities



Utility Locates,  
Applewood Sanitation District



Emergency Locate,  
Westridge Sanitation District

## CONSTRUCTION ADMINISTRATION SERVICES

RGA maintains a staff of experienced and qualified construction administration personnel to complement our design capabilities. We have developed computer software to assist our construction administration staff with job cost, pay estimates, project tracking, and scheduling. Cost estimate data received from multiple bids located in different locations allows RGA to feel confident in providing cost estimates to our clients that are representative of project expectations. Our services include:

- Bidding services
- Conduct pre-bid meeting
- Contract administration
- Conduct pre-construction meeting
- Review material submittals
- Construction observation and documentation
- Pay applications/change orders
- Conduct progress meetings
- Initial and final acceptance reviews and letter
- Perform civil rights and labor compliance interviews and documentation
- Utility locating

### Representative Projects

#### Crestview Water and Sanitation District

Adams County, Colorado

- West 64th Avenue 8" Waterline Plans
- 2005, 2006, 2007, 2008, 2009, 2011, 2013, 2014, 2015 Waterline Replacement Project
- 2007, 2008, 2009, 2010, 2011, 2012, 2013, 2014 Sanitary Sewer Replacement Project
- Pecos Street Grade Separation 20" Transmission Main
- Midtown Development
- Eagle P3
- Pomponio Terrace

#### Applewood Sanitation District

Wheat Ridge, Colorado

- District-wide annual sanitary sewer line replacement projects

#### Westridge Sanitation District

Wheat Ridge, Colorado

- District-wide annual sanitary sewer line replacement projects



Pipeline Assessment,  
Westridge Sanitation District

#### Platte Canyon Water and Sanitation District

Littleton, Colorado

- 2019 DCIP Water Main Replacement Project
- 2019 South Sheridan Boulevard Sanitary Sewer Main Replacement Project

#### Southwest Metropolitan Water and Sanitation District

Littleton, Colorado

- 2019 DCIP Water Main Replacement Project
- 2018 South Pierson Street Water Main Replacement Project
- 2018 West Parkhill Avenue Sanitary Sewer Main Replacement Project

#### Denver Water

Denver, Colorado

- Antero Reservoir
- Strontia Springs
- RTD Northwest Corridor Conduit Nos. 72, 94, 125
- Foothills Treatment Plant Phase I and III
- Long Lake Feeder Ditch Replacement
- Ralston Creek Flume
- Foothills Treatment Plant Paving



Material Verifications,  
Crestview Water and Sanitation District



## MULTI-USE TRAIL AND PARK ENGINEERING

RGA has led or been a key participant in the planning and design of a broad range of bikeways and recreational trails. Many of our projects were developed with grant funds from grant applications completed by RGA.

### Representative Projects

#### Town of Jamestown, Colorado

- Town Square Park

#### City of Broomfield, Colorado

- SH 121 to SH 287 bikeway/walkway connector

#### South Suburban Park & Recreation District

- Orchard Road pedestrian bridge
- Dutch Creek pedestrian bridge
- Cherry Hills pedestrian bridge

#### City of Grand Junction, Colorado

- Colorado River pedestrian bridge and path

#### City of Woodland Park, Colorado

- Woodland Park sidewalk/bikeway

#### City of Thornton, Colorado

- Thornton city-wide trail improvements

#### Town of Bennett, Colorado

- Safe Route to School

#### City of Sheridan, Colorado

- Bear Creek Pedestrian Bridge
- Irving and Quincy Trail

#### City of Boulder, Colorado

- US 36 and Baseline Road bikeway
- Williams Village bikeway connector
- 13<sup>th</sup> Street bicycle facility

#### Town of Vail, Colorado

- Gore Creek pedestrian path

#### City of Alamosa, Colorado

- Rio Grande River pedestrian bridge

#### City of Black Hawk, Colorado

- North Clear Creek pedestrian path

#### Centennial Structures

##### Centennial, Colorado

- Meadowood Park pedestrian bridge



Safe Trail to School,  
Town of Bennett



Town Square Park,  
Town of Jamestown

## PERSONNEL

RGA believes that the quality of services provided stems from the skill, experience and professionalism of our personnel. The following is a list of RGA staff members that are the main contacts for each of our services. These individuals are supported by our staff of design engineers, CADD technicians and construction services and administrative personnel.

### Principals:



#### **Ricardo J.F. Gonçalves, P.E., President**

Mr. Gonçalves has over 49 years of experience in the design and construction management of a broad range of civil engineering projects. Expertise includes water and wastewater treatment plants, pumping and storage facilities, water and wastewater collection and distribution systems, roadway design, airport planning and design, storm drainage facilities, residential and commercial site planning and development, and recreational space projects. Mr. Gonçalves also has specialized expertise in municipal and special district engineering and administration. He personally acts as the City Engineer or District Engineer for a number of municipalities and special districts.



#### **James R. Landry, P.E., CWP, Chief Operating Officer**

Mr. Landry has 23 years of experience in utility and roadway design, hydraulic and drainage engineering, and construction management. He has been involved in the preliminary, final design, and construction management for a wide range of public and private sector projects. Mr. Landry also serves in the capacity of City/Town/District Engineer for several municipalities represented by RGA. Mr. Landry is also the Certified Operator in Responsible Charge for several towns and special districts.

### Engineering Services:



#### **Gary E. Welp, P.E., CFM, Senior Project Manager**

Mr. Welp has over 22 years of civil engineering design and management experience in master drainage studies, regional drainage, water systems, utility pipe lines, and sewer interceptors, and residential and commercial subdivisions. Mr. Welp's responsibilities include hydraulic analysis, drainage studies, floodplain studies, development review, and design of drainage and municipal projects for the company. He is proficient in the use of AutoCAD, Haestad StormCAD, NeoUDSewer, HydroPond, CUHP, EPA SWMM 5.0, HEC-RAS, HEC-HMS, Haestad Culvertmaster and Haestad FlowMaster.



**Children's Pool,  
Cherry Creek Vista Park & Recreation District**



**Construction Administration,  
Hi-Land Acres Water and Sanitation District**



## PERSONNEL, CONTINUED



### **Ernest A. Kern, P.E., CFM, Senior Project Manager**

Mr. Kern has 42 years of professional civil engineering experience consulting for municipalities. He has served in capacities ranging from construction inspection, plan review, and engineering design through project management. He has also completed retrofit designs to alleviate problems in developed areas due to unforeseen growth or inadequate design. Mr. Kern has completed design and project management for various types of engineering projects, including residential and commercial subdivisions; water distribution systems, pump stations, and storage facilities; wastewater collection systems and lift stations; street improvements; and drainage systems, including channels, culverts, drop structures, storm sewers, and detention facilities.



### **Patrick Roberts, P.E., CCM, Project Engineer**

Mr. Roberts has 13 years of experience in district engineering and construction administration. He has provided these services to 14 local metropolitan, water and sanitation districts and has utilized his geotechnical background to ensure proper construction administration and testing. Patrick is involved with the National Society of Professional Engineers (NSPE) and acts as a state representative for the Construction Management Association of American (CMAA), both of which focus on ethics and leadership with the engineering and construction administration field. He also has experience in Microsoft Office Suite, Flowmaster, Autocad/Civil 3D, ArcGIS, and Infosewer Suite 7.

## Construction Administration Services:



### **Karl Kluge, Senior Construction Manager**

Mr. Kluge has spent the last 18 years with RGA as a design engineer, AutoCAD technician, construction manager, and senior construction observer of water, sanitary and storm sewer utilities, street construction, water tanks, diversions dams, bridges, water and wastewater treatment facilities, effluent pond lining, storm water structures and erosion control features. Responsibilities include contract document administration and compliance, bidding services, pay applications and change order processing, daily documentation and coordinating construction to final completion and warranty acceptance.



**Water Treatment Plant Improvements,  
Town of Eckley**



**Bridge 303 and Niver Creek Improvements,  
Adams County**

## PERSONNEL, CONTINUED



### **Gaimé Esparza, Construction Inspector**

Mr. Esparza has 28 years of construction and project administration and observation experience, including bridge, roadway, general infrastructure, drainage, utility and building construction. Mr. Esparza also has experience with ArcGIS and AutoCAD. Mr. Esparza's duties have included supervision of inspection, testing and construction personnel, conducting pre-construction conferences, bid coordination, contract and specifications preparation, pay estimate preparation, site coordination and inspection, contract management, project management, and program management.



### **Melissa An, Construction Inspector**

Ms. An's role will be to lend practical assistance to the team in the evaluation of the existing sanitary sewer collection system and recommendations for capital improvement projects, and assist in the preparation the master plan. Ms. An has over 7 years of experience in structural and geotechnical engineering, including: drafting reports, basic design calculation, calculation checks, and as well as performing field work.



**District Engineer,  
Highland Park Metropolitan District**



**On-Call Construction Administration,  
Denver Water**